

# ACT ONE FINALE

Bass Trombone

ACT ONE FINALE V2-RNSIT16-Ode To Newfoundland/Land of Hope and Glory/Boys of the Old Brigade BBAND

Moderato

**A**



8



16

**B**



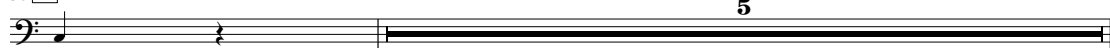
24

**C**



36

**D**



ACT ONE FINALE V2-RNSIT16-Ode To Newfoundland/Land of Hope and Glory/Boys of the Old Brigade BBAND

2

Bass Trombone

42

42 **2**  
*mf*

59

59 *f*

72

72 **E**  
*f*

84

84 **F**

100

100 **G**

115

115 *f*

ACT ONE FINALE V2-RNSIT16-Ode To Newfoundland/Land of Hope and Glory/Boys of the Old Brigade BBAND

Bass Trombone

141 **H**

Musical staff for measure 141, Bass Trombone. The staff is in bass clef with a key signature of two flats (B-flat and E-flat). The music consists of a continuous eighth-note line. The dynamic marking is *mf*. A hairpin crescendo symbol is located at the end of the staff.

149

Musical staff for measure 149, Bass Trombone. The staff is in bass clef with a key signature of two flats. The music consists of a series of notes with varying dynamics: *mp*, *cresc.*, *mf*, and *cresc.*

157 **I**

Musical staff for measure 157, Bass Trombone. The staff is in bass clef with a key signature of two flats. The music consists of a series of notes with a dynamic marking of *f* and a *cresc.* marking at the end.

165 **J**

Musical staff for measure 165, Bass Trombone. The staff is in bass clef with a key signature of two flats. The music consists of a series of notes with a dynamic marking of *ff*.

173 **K**

Musical staff for measure 173, Bass Trombone. The staff is in bass clef with a key signature of two flats. The music consists of a series of notes with a dynamic marking of *ff* and a hairpin crescendo symbol.